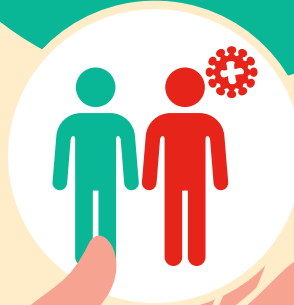


Let's keep Bracknell Forest **safe**

Wear a face covering in most public indoor venues including public transport, shops, cinemas and theatres (unless exempt).



Fully vaccinated contacts of a positive COVID-19 case must do lateral flow tests for seven days and get a PCR if a LFT is positive or they develop symptoms. Unvaccinated adult contacts must isolate for 10 days.



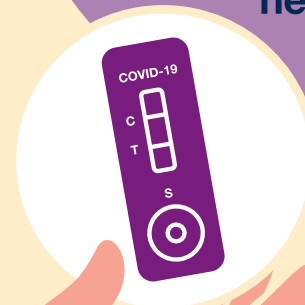
Work from home if you can.



If meeting up inside, keep the room well ventilated.



Do lateral flow tests, whether you are vaccinated or not, when you are at higher risk of catching or passing on COVID-19 in crowded and enclosed spaces. Report the results, even if they are negative.



Get your vaccine or booster when you are eligible - book your appointment at NHS. UK or by calling 119. COVID passes are being introduced for nightclubs and settings where large crowds gather, including: unseated indoor events with 500 or more attendees; unseated outdoor events with 4,000 or more attendees; and any event with 10,000 or more attendees.



If you have symptoms or have been in contact with a positive case, book a PCR test at [GOV.UK](https://www.gov.uk) or by calling 119.